

THE CRUCIBLE®

INSPIRING CREATIVITY IN EVERYONE

CLASSES THAT SET YOUR IMAGINATION ON FIRE!

- BLACKSMITHING
- CERAMICS
- ENAMELING
- FIRE PERFORMANCE
- FOUNDRY
- GLASS
- HOT WHEELS
- JEWELRY
- KINETICS & ELECTRONICS
- MACHINE SHOP
- MOLDMAKING
- NEON & LIGHT
- RESOURCES FOR ARTISTS
- STONE WORKING
- SOFT SCULPTURE
- WELDING
- WOODWORKING
- YOUTH CLASSES**

and much more...



CLASS SCHEDULE | SUMMER 2011

INDEX

ABOUT THE CRUCIBLE	3
HOW TO REGISTER	3
THINGS TO KNOW BEFORE CLASS	4
FAMILY FUN WEEKENDS	6
MOTHER'S DAY TASTERS	7
BLACKSMITHING	8
CERAMICS	10
ENAMELING	11
FIRE PERFORMANCE	12
FOUNDRY	14
GLASS	15
HOT WHEELS	18
JEWELRY	18
KINETICS & ELECTRONICS	21
MACHINE SHOP	22
MOLDMAKING	23
NEON & LIGHT	23
RESOURCES FOR ARTISTS	24
SOFT SCULPTURE	25
STONE WORKING	26
WELDING	26
WOODWORKING	29
YOUTH CLASSES	31
YOUTH SUMMER CAMPS	31
CORPORATE TEAMBUILDING	36
CREATE PROGRAM	37
STUDIO RENTALS	37
VOLUNTEER INFORMATION	38
MEMBERSHIP INFORMATION	38
DONORS & MEMBERS	39
STAFF MEMBERS	5
BOARD MEMBERS	5

CRUCIBLE (krü-se-bel) noun:

1. A vessel made of a refractory substance such as silicon-carbide, used for melting and calcining glass or metal at high temperatures.
2. A severe test, as of patience of belief; a trial.
3. A place or situation in which concentrated forces converge and interact to cause or influence change or development.
4. An educational nonprofit collaboration of art, industry and community, founded in 1999 and located in Oakland.



Youth ARC Welding Class,
Oxyacetylene Torching Cutting Metal

THE CRUCIBLE

Where forges roar and sparks fly, beginners are always welcome and we **inspire creativity in everyone.**

MISSION STATEMENT

The Crucible is an educational facility that fosters a collaboration of Arts, Industry and Community. Through training in the fine and industrial arts, The Crucible promotes creative expression, reuse of materials and innovative design while serving as an accessible arts venue for the general public.

YOUTH & ADULT CLASSES

The Crucible offers beginning, intermediate and advanced classes in the fine and industrial arts to more than 5,000 people each year in over 175 classes and workshops. Small class sizes allow our instructors to provide personalized attention and assistance.

OUR CELEBRATED FACULTY: ARTISTS & INDUSTRIAL EXPERTS

Since 1999, The Crucible has showcased the talents of a diverse and expert faculty of industry professionals and emerging and acclaimed artists. Our faculty members teach here because they enjoy the unique atmosphere and the freedom it gives them to focus on their students.

HOW TO REGISTER FOR CLASSES

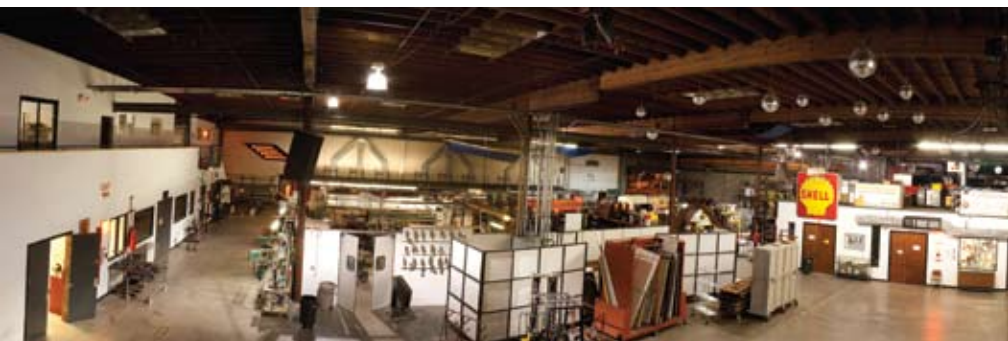
1. Online anytime at www.thecrucible.org.
2. Call us at (510) 444-0919 or visit in person during office hours:
Monday-Thursday, 10AM to 6PM
Friday 10AM to 2PM
3. Register by mail by sending us the code for the class you want, your name and contact information, the name of the person taking the class and a check for the price of the class. Be sure to read about our refund policy in "Things to Know..." (page 4). By sending in this information you are agreeing that you have read and understood our policy.

EARLY REGISTRATION FOR MEMBERS

Crucible members can register for classes before anyone else, and also enjoy discounts on classes, events and studio access. To learn more about membership benefits, visit www.thecrucible.org, or see page XX.

SESSION DATES

Session runs: July 23 - August 28, 2011
Member registration begins May 24, 2011
Open registration begins June 14, 2011



Want to Learn More about The Crucible?

Come tour our studio at 1260 7th Street in Oakland on any Tuesday or Thursday at 6PM. (No tours on holidays or during Crucible events.)



GENERAL INFORMATION

- Unless otherwise mentioned, all materials you need for the class are provided. If you want to make a large project, discuss your plans with your instructor. Not all projects can be accommodated and there may be additional costs for materials.
- Connect with your classmates! We encourage you to help each other out by providing rides to BART, walking together to your cars and carpooling. As with any urban environment, be aware of your surroundings when walking.

WHAT TO WEAR

- Please wear all natural fiber clothing. Nylon, polyester, spandex or other synthetics are not recommended around open flames.
- No flip flops, sandals or open-toed shoes of any kind are allowed in the studio.
- Please dress in long pants; no shorts are allowed in the studio. Skirts are not recommended.
- The studio can be very cold or very hot. Wear layers.

YOUTH ATTENDING ANY CLASSES

- Parents **must accompany youth to the first day of class** and must bring a **completed** parental consent form and medical authorization form to the first class. Youth cannot participate without a completed parental consent form for each class for which they are registered.
- Please notify staff of any **physical, social, behavioral or emotional health conditions**.
- Youth 12 and older can sign up with an adult for any Family Fun Weekend workshop. At the time of registration, the name of the youth under 18 and his or her date of birth must be provided. This can be done over the phone or in the comment section online. A parental consent form must be filled out and brought with the student to the first class.
- Youth 16 and older can sign up for an adult class with the prior consent of The Crucible's program staff. Registration *must* be done in person or over the phone.
- Please be prepared to provide the youth's name and date of birth. Youth who attend adult classes without the consent of program staff will not be able to participate in the class and will not receive a refund.
- If your child will be in class all day, he/she should bring a sack lunch. Morning and afternoon snacks will be provided.
- The Crucible does not allow weapon making in youth classes.
- Before- and after-care is not provided.

LOCATION

The Crucible is conveniently located at 1260 7th Street, in Oakland, just two blocks east of the West Oakland BART station.

BEHAVIOR POLICY

The Crucible strives to create an environment that respects its participants' physical and emotional well-being. Students are expected to conduct themselves with respect for other individuals, the organization and the facility at all times. Students will review Studio Rules and Group Agreements of The Crucible during their first class. The director reserves the right to enforce these rules, and anyone in violation will be subject to disciplinary consequences including, but not limited to, immediate dismissal from class without refund.

TRANSFERS, CANCELLATIONS & REFUNDS

Cancellation Policy: The Crucible has the right to cancel any class for any reason. In some cases, classes are cancelled due to low enrollment. In the event that The Crucible cancels your class, you will be notified by phone or email and your tuition fees will be credited or refunded in full.

Withdrawal Policy: Students who withdraw from a class at least 7 days prior to the first scheduled session will received a full refund, less a \$25 withdrawal fee. No portion of tuition will be refunded or transferred if a withdrawal is made less than 7 days before the start of the class's first session or after the start of the first class session. There are no exceptions.

Transfer Policy: Students must adhere to the Withdrawal Policy. Any refund or credit due after withdrawal can be applied to enrollment in a different class.

Missed Classes Policy: There are no refunds, transfers, make-ups or deferrals for missed classes.

Returned Checks: There is a \$35 charge for returned checks.

If you have questions or would like to transfer or cancel a class, please email us at registrar@thecrucible.org, or call us at (510) 444-0919.

STAFF MEMBERS

Kristy Alfieri	<i>Education Director</i>	Kier Lugo	<i>Senior Studio Manager</i>
Ken Austin	<i>IT Assistant</i>	Kevin McElroy	<i>Assistant Studio Manager</i>
Brian Buono	<i>Studio Manager</i>	Rob Nehring	<i>Adult Program Director</i>
Charles Cantero	<i>Studio Manager</i>	Ismael Plasencia	<i>Youth & Community Assist. Manager</i>
Patricia Chavez	<i>Assistant Studio Manager</i>	Sabina Rasenow	<i>Operations / HR Coordinator</i>
Michael Curry	<i>Fire Safety</i>	Daniel Stauber	<i>Volunteer Program Manager</i>
Nick DiPhillipo	<i>Pyrotechnician</i>	Michael Sturtz	<i>Founder</i>
Joey Gottbrath	<i>Studio Operations Director</i>	Kendel Taylor	<i>Assistant Studio Manager</i>
Carla Hall	<i>Youth Program Director</i>	Mark Watson	<i>Assistant Studio Manager</i>
Jennifer Harrity	<i>Graphic Designer</i>	Matt Wolpe	<i>Studio Manager</i>
Peter Kropf	<i>Senior Studio Manager</i>	Steven Young	<i>Intrim Executive Director</i>
Sheri Kuehl	<i>Development Director</i>	Jennifer Zahrt	<i>Marketing Assistant</i>
Jonaya Leek	<i>Program Administrator/Registrar</i>		

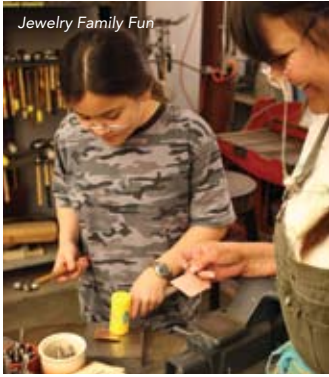
BOARD OF DIRECTORS

Jeremy Crandell	<i>President</i>
Greg Hansen	<i>Vice President</i>
Tim Irvin	<i>Treasurer</i>
Melissa Rosengard	<i>Secretary</i>

EMERITUS ADVISORY BOARD

Deborah Chalsty	Charles Olson
Bob Dubow	Nina Sazevich
Joaquin Haskell	Phil Tagami
Mark McClure	

Kevin Kosik
Leslie Pritchett
Gregory Thomas



Learn New Skills Together

Spend some quality time with those you love while learning a new skill such as blacksmithing, welding, jewelry or neon during a Family Fun Weekend class. You define family – not us! All Family Fun Weekend classes are open to youth ages 12 and up with an adult. Tuition is discounted when you sign up and take a Family Fun Weekend class together.

Saturday & Sunday • August 20-21, 2011 • 10AM-6PM

Introduction to Blacksmithing

Price \$585 **Member Price** \$540.50

Glass Flameworking

Price \$585 **Member Price** \$544.50

Introduction to Jewelry & Metals I

Price \$520 **Member Price** \$484

Introduction to Neon ++

Price \$570 **Member Price** \$533

Introduction to Welded Sculpture

Price \$565 **Member Price** \$521.50

Introduction to MIG Welding

Price \$620 **Member Price** \$574

Beginning TIG Welding

Price \$620 **Member Price** \$574

* Prices above reflect cost for two family members.

++ This class is taught on two Sundays - August 21 & August 28

All Family Fun Weekend classes are beginner-friendly, but all levels are welcome.





Blacksmithing
photo by Christa Curtin

Immers Yourself in Creativity and Fire!

The Crucible Immersion Workshops are designed to give students, beginner level to advanced, an opportunity to do a deep-dive study in a particular curriculum area. Over the course of five days, you will learn theory, principles, and extensive techniques that will give you the necessary skills to work independently. Each day will consist of six hours of instruction with four hours of optional open lab time in the evening, with the exception of Saturday which will be a full 8 hour lab day. Lunch and dinner will be provided. The workshop week will conclude with a dinner and artist reception, on Saturday evening, where artists will have their work on display to talk proudly about. Friends and family will be welcome and can join the dinner for a fee.

Come experience The Crucible in an intense learning program that will foster new skills and develop the artist in you. No experience is necessary to take this class. Sign up now for this incredible opportunity to indulge in the lifestyle of a full time artist.

Blacksmithing Immersion Workshop

By the heat of a 2500 degree forge, you will heat raw steel until it is white-hot and moldable like clay. Using blacksmithing tools, such as, hammers, an anvil, punches, hot cuts, drifts, the fly press, the power hammer, guillotine and spring die sets you will learn to transform the shape of metal into hand-crafted projects including components of a small table that you will complete by the end of the workshop.

During this workshop, you will work with a professional blacksmith to learn 3D design and construction techniques. You will have the opportunity to construct a project of your very own design during the open lab. We will have a library of metal working books and sample projects for inspiration.

Glass Flameworking Immersion Workshop

Over the flame of a 4000 degree torch, you will learn to transform the shape of glass using flameworking tools such as graphite marvers, paddles, and marble molds, as well as tweezers, mashers, steel mandrels, paddles, reamers, and more. You will melt, shape, and transform tubes and solid rods of glass into marbles, beads, flowers, insects, monsters, and hollow ornaments.

During this exciting workshop, professional glass artists will guide you through the techniques of working with borosilicate and soda-lime glass (soft glass). You will have the opportunity to construct projects of your very own design during the open lab. We will have a library of glassworking books and sample projects for inspiration.



Keep Your Young Artist Fired Up Over The Summer!

Summer vacation is here and your child is primed and ready for endless hours of fun. During the summer many teachers and parents are concerned about how much knowledge is lost from brain drain over the summer. According to the National Summer Learning Association, when youths have an education-free summer vacation, they lose nearly two months worth of grade-level equivalency in math skills and some even lose more than two months in reading achievement.

Have no fear! The Crucible has twenty-three different classes over four weeks to create either a full-day or half-day experience that your child won't soon forget while keeping their brains engaged. Plus did you know that day-camps such as this can give you a tax break?

June 27 - July 1 • July 18 - 22 • July 25 - 29 • August 1 - 5

AGES 8-11

Ceramics: Mudslinging Madness!
Clask Mask Making
Jazzy Clay Jewelry
Wire Jewelry: Intro to Bling!
Extreme Gizmos
Cartoneria (Mexican Paper Sculpture)
Super Sculpture
Woodcarving

AGES 12-17

Blacksmithing
Enameling
Adventures in Sand Casting
Glass Flameworking
Fused Glass & Mosaic Madness
Glass Blowing **New**
Exploration in Metal Jewelry
Casting Wax to Silver Jewelry
Radical Robots
Clay Animation **New**
Glass Tube Sculpture: Intro to Neon
Introduction to Welded Sculpture
MIG Welding
TIG Welding
Frame Alteration: Art Bike
Woodturning

See full schedule of youth summer camp classes starting on page 28.



Blacksmithing
photo by Christa Curtin



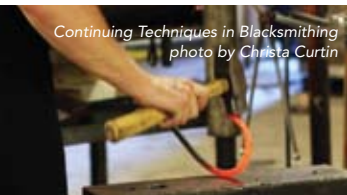
Sign Up Now For A Make-ation!

Take a break from the mundane, spend some time being creative and learning something new this spring. You'll come back from your "make-ation" with a new skill and some original art to show off, and an experience you'll never forget.

Monday - Friday • August 8-12, 2011 • 10am - 4pm

Introduction to Blacksmithing	Price \$450 Member Price \$412.50
Foundry Fundamentals	Price \$525 Member Price \$483.50
Glass Flameworking	Price \$510 Member Price \$474
Introduction to Welded Sculpture	Price \$450 Member Price \$411.50

Continuing Techniques in Blacksmithing
photo by Christa Curtin



Women's Blacksmithing
photo by Eric Gillet



SUMMER 2011 CLASS LISTINGS

BLACKSMITHING

Introductory blacksmithing classes teach the basic techniques of heating metal until it becomes pliable enough to shape with hand tools, such as a hammer, anvil and chisel. You'll learn five basic smithing operations: drawing, shrinking, bending, upsetting and punching, and you'll make several small pieces of your own. Advanced classes introduce specialized skills in bladesmithing, forge welding and ornamental ironwork.

Immersion Program: Blacksmithing

Entry-level

3BLK8511 5 SESSIONS Chris Niemer
A July 5-9 Tuesday-Saturday 10AM - 6PM
Price \$1,200 Member Price \$1,080

Introduction to Blacksmithing

Entry-level

3BLK1011 INTENSIVE Crucible Faculty
A Jul 30 - 31 Saturday & Sunday 10AM - 6PM
B Aug 20-21 Saturday & Sunday 10AM - 6PM
Price \$365 Member Price \$335.50

3BLK1011 FAMILY FUN WEEKEND Crucible Faculty
FA Aug 20-21 Saturday & Sunday 10AM - 6PM
Price for Two \$585 Member Price \$540.50

3BLK1111 5 SESSIONS Crucible Faculty
A Jul 26 - Aug 23 Tuesdays 7 - 10PM
B Jul 28 - Aug 25 Thursdays 7 - 10PM
Price \$365 Member Price \$335.50

3BLK1111  SUMMER WORKSHOPS Crucible Faculty
WA Aug 8 - 12 Monday - Friday 10AM - 4PM
Price \$450 Member Price \$412.50

Women's Blacksmithing

Entry-level

3BLK9911 INTENSIVE Carla Hall
A Aug 13-14 Saturday & Sunday 10AM - 6PM
Price \$365 Member Price \$335.50

Continuing Techniques in Blacksmithing

Prerequisite: Introduction to Blacksmithing

3BLK2011 INTENSIVE Crucible Faculty
A Aug 27-28 Saturday & Sunday 10AM - 6PM
Price \$345 Member Price \$317.50

Forge Your Own Blacksmithing Tools

Prerequisites: Introduction to Blacksmithing & Continuing Techniques in Blacksmithing

3BLK4511 5 SESSIONS Ken Gilliland
A Jul 27 - Aug 24 Wednesdays 7 - 10PM
Price \$410 Member Price \$379

Coming in Future Quarters...

- Build Your Own Propane Forge
- Techniques n Ornamental Iron Work
- Bladesmithing
- Forgewelding
- Blacksmithing Lab

For more information on these courses call us at (510) 444-0919 or visit our website at www.thecrucible.org.



Sculpting in Clay

Sgraffito in enamel
Introduction to Enameling I
photo by Jennifer Zahrt

CERAMICS

Much more than bowls and mugs, ceramic art includes both functional pieces and purely decorative items. Formed clay pieces are heated to high temperatures in a kiln, increasing their strength, setting their shapes and finishing their surfaces. At The Crucible, we focus on sculptural handwork and hand building, the earliest—and most personal—forming method. While hand building is slower and more gradual than wheel-throwing, it offers a high degree of control and flexibility in creating one-of-a-kind works of art. Ceramic work also provides a foundation in three-dimensional thinking that transfers directly to jewelry, glass and foundry work.

Sculpting in Clay

Entry-level

3CER1011	5 SESSIONS	Crucible Faculty
A Jul 27 - Aug 24	Wednesdays	7 - 10PM
Price \$315 Member Price \$288		

The Art of Raku

Entry-level

3CER3011	5 SESSIONS	Crucible Faculty
A Jul 26 - Aug 23	Tuesdays	7 - 10PM
Price \$380 Member Price \$354		

Coming in Future Quarters...

- Creative Clay Exploration for Parent & Child (Ages 3-5 years)
- Clay Together for Parent & Child (Ages 5-7 years)
- Classical Clay Portraiture
- Create a Blessing Bowl

For more information on these courses call us at (510) 444-0919 or visit our website at www.thecrucible.org.

ENAMELING

Enameling is the colorful result of fusing powdered glasses to metal with high heat, forming a durable vitreous coating. The first enamels date to the 6th Century BC, in ancient Cyprus. At The Crucible, you can learn both traditional and experimental techniques of application on various metals, from gold to steel, and everything in between. Learn to make objects ranging from fine cloisonné jewelry to large-scale steel sculptures and wall pieces.

Introduction to Enameling I

Entry-level


3ENL1011	INTENSIVE	Crucible Faculty
A Aug 6-7	Saturday & Sunday	10AM - 5PM
Price \$275 Member Price \$251.50		
3ENL1111	5 SESSIONS	Crucible Faculty
A Jul 27 - Aug 24	Wednesdays	7 - 10PM
Price \$275 Member Price \$251.50		


Setting Enamels


Prerequisite: Introduction to Enameling I



3ENL1211	5 SESSIONS	Olga Barmina
A Jul 30-31	Saturday & Sunday	10AM - 6PM
Price \$340 Member Price \$315		

 When you sign up for an intro class and a continuing class in the same area, both with this gear symbol, you'll receive our **WORKING TOGETHER** discount of up to \$40 off.

 These workshops include 3-1/2 hours of instruction and 2 hours of independent lab work each day.

 These workshops include additional work time and meals, see page 7 for details.

Small Scale Cloisonné
piece by Roberta Smith
photo by Christa Curtin



Introduction to Fire Staff
photo by Becca Jay



Small Scale Cloisonné Enameling

Prerequisite: Introduction to Enameling I

3ENL2211 INTENSIVE Roberta Smith

A Aug 20-21 Saturday & Sunday 10AM - 6PM

Price \$290 Member Price \$266

Coming in Future Quarters...

- Introduction to Enameling II
- Fred Ball Experimental Enameling Techniques
- A Primer in 3D Enameling
- Art Clay Silver and Enameling
- Limoges: Enamel Painting
- Plique-A-Jour: Enameling Techniques
- Photographic Transfer on Enamels (3-Day Intensive)
- Grisaille: Enameling Technique
- Projects in Enameling

For more information on these courses call us at
(510) 444-0919 or visit our website at www.thecrucible.org.

FIRE PERFORMANCE

Fire is a powerful, mythic element. Humans have always been fascinated by fire. It has played a significant role in our history and molded our very way of life. Since the dawn of civilization, cultures have used fire as a form of artistic expression and warfare. For artists, fire can be both subject matter and the means by which the art itself is created. Fire performers have a deep respect for the flame and know that by no means do they ever have total control over it. At The Crucible, you can learn to safely manipulate fire's captivating power, and learn to make and use various tools like poi, fire staffs, hula-hoops and fire rope dart.

Art of Fire Dancing (Poi)

Entry-level

3PER1011 10 SESSIONS Lara Hopwood

A Jul 25 - Aug 22 Mondays & Wednesdays 8 - 9:15PM
Aug 27 Saturday 12 - 4PM

Price \$205 Member Price \$187.50

Art of Fire Dancing: Intermediate & Advanced Poi

Prerequisite: Art of Fire Dancing (Poi)

3PER1111 5 SESSIONS Amber Garret

A Jul 26 - Aug 23 Tuesdays 8 - 9:15PM

Price \$95 Member Price \$85.50



Charles Cantero Demonstrating Fire Rope Dart
photo by Jonaya Leek



Jordan Campbell Demonstrating Fire Poi
photo by Matthew Silvey

Poi Flowers

Prerequisite: Art of Fire Dancing (Poi)



3PER1511 INTENSIVE Jordan Campbell
A Aug 6-7 Saturday & Sunday 12-1:30PM
Price \$55 Member Price \$50

Note: Students must bring their own poi.

Fearless Fire Eating

Entry-level

3PER2011 INTENSIVE Patricia Chavez
A Jul 30-31 Saturday & Sunday 1 - 3PM
B Aug 20-21 Saturday & Sunday 1 - 3PM
Price \$95 Member Price \$88

Introduction to Fire Staff

Entry-level

3PER1411 5 SESSIONS Hunter
A Jul 25 - Aug 22 Mondays 6:30 - 8PM
Price \$120 Member Price \$110.50

Dragon's Breath

Entry-level

3PER3011 INTENSIVE Patricia Chavez
A Aug 20-21 Saturday & Sunday 3:30 - 5:30PM
Price \$175 Member Price \$160

Beginning Fire Rope Dart

Entry-level

3PER1711 5 SESSIONS Charles Cantero
A Jul 28 - Aug 25 Thursdays 7-8:15PM
Price \$205 Member Price \$187.50

Learn to Juggle

Entry-level



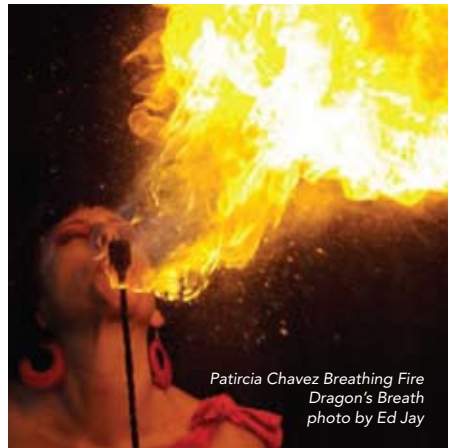
3PER4511 INTENSIVE Isaac Blackwood
A Jul 30-31 Saturday & Sunday 12-1:30PM
Price \$70 Member Price \$65

Note: We will not juggle live fire.

Coming in Future Quarters...

- Beginner Hula Hoop
- Intermediate Fire Hoop

For more information on this course call us at
(510) 444-0919 or visit our website at www.thecrucible.org.



Patricia Chavez Breathing Fire
Dragon's Breath
photo by Ed Jay



Wax Working for Lost Wax Casting
photo by Akiko Photo



Molten Bronze
photo by Akiko Photo

FOUNDRY

Casting metal is a 6,000-year-old process still used in both manufacturing and fine art. The founder melts metal in a crucible, pours the liquid metal into a mold and then removes the mold material or the casting once the metal has cooled and solidified. The most common metals used in fine art are aluminum, bronze and cast iron. In The Crucible's entry-level foundry classes, you will learn the chemistry and basic steps that go into making a piece of cast metal, while advanced classes further explore the intricacies of casting and metal finishing.

Foundry Fundamentals

Entry-level

3FOU1111 SUMMER WORKSHOPS Crucible Faculty

WA Aug 8 - 12 Monday - Friday 10AM - 4PM

Price \$525 Member Price \$483.50

Patinas Made Easy

Entry-level

3FOU2111 INTENSIVE Crucible Faculty

A Aug 27-28 Saturday & Sunday 10AM - 5PM

Price \$240 Member Price \$223

Cupola Iron Casting

Entry-level

3FOU3011 7 SESSIONS Crucible Faculty

A Jul 26 - Aug 16 Monday-Thursday 6 - 10PM
Aug 19 Friday 3-10PM
Aug 20 Saturday 12-4PM

Price \$450 Member Price \$410

Coming in Future Quarters...

- Bronze Cating: Ceramic Shell Process
- Sand Casting in Bronze & Aluminum
- Introduction to Bell Casting
- Continuing Techniques in Foundry: Cast, Clip & Pour
- Design and Make Your Own Waffle Iron **New This Fall**

For more information on these courses call us at (510) 444-0919 or visit our website at www.thecrucible.org.



photo by Akiko Photo

GLASS

The Crucible's glass program teaches many different methods for creating beautiful and functional objects from glass, with a focus on warm glass and coldworking. Among the most versatile of materials, you can work with glass rods directly in the flame of a torch; fuse and reshape pieces of glass by melting them in a kiln; cast glass into molds; drill, carve and cut cold glass; or use a high-temperature glory hole to heat and form glass with hand tools.

Immersion Program: Flameworking

Entry-level

3GLA8511 5 SESSIONS Tara Murray

A July 5-9 Tuesday-Saturday 10AM - 6PM

Price \$1,200 Member Price \$1,080



Glass Flameworking



Glass Flameworking

Glass Flameworking

Entry-level



3GLA1011 INTENSIVE Crucible Faculty

A Jul 30 - 31 Saturday & Sunday 10AM - 6PM
B Aug 20-21 Saturday & Sunday 10AM - 6PM

Price \$360 Member Price \$333

3GLA1011 FAMILY FUN WEEKEND Crucible Faculty

FA Aug 20-21 Saturday & Sunday 10AM - 6PM

Price for Two \$585 Member Price \$544.50

3GLA1111 5 SESSIONS Crucible Faculty

A Jul 25 - Aug 22 Mondays 6 - 10PM
B Jul 27 - Aug 24 Wednesdays 6 - 10PM

Price \$475 Member Price \$442.50

3GLA1111 SUMMER WORKSHOPS Crucible Faculty

WA Aug 8 - 12 Monday - Friday 10AM - 4PM

Price \$510 Member Price \$474

Advanced Marble Making Techniques

Prerequisite: Glass Flameworking

3GLA1611 INTENSIVE Crucible Faculty

A Aug 27-28 Saturday & Sunday 10AM - 6PM

Price \$285 Member Price \$261.50

Glass Beads

Entry-level



3GLA1211 INTENSIVE Crucible Faculty

A Aug 6-7 Saturday & Sunday 10AM - 6PM

Price \$285 Member Price \$261.50

Adventures in Soft Glass: Finding Your Inner Monster

Prerequisite: Glass Flameworking or Glass Beads

3GLA1911 1 SESSION Ralph McCaskey

A Jul 23 Saturday 10AM - 6PM
B Jul 24 Sunday 10AM - 6PM

Price \$175 Member Price \$162

Duplicating Nature in Glass

Prerequisite: Glass Flameworking

3GLA1511 INTENSIVE Tara Murray

A Aug 13-14 Saturday & Sunday 10AM - 6PM

Price \$355 Member Price \$328.50

Lab: Glass Flameworking (Soft Glass)

Crucible Members Only

Prerequisites: Glass Flameworking I, Glass Beads or permission from Department Head

3LAB1511 5 SESSIONS

B Jul 28 - Aug 25 Thursdays 6 - 10PM

Price \$170 Member Price \$157

When you sign up for an intro class and a continuing class in the same area, both with this gear symbol, you'll receive our **WORKING TOGETHER** discount of up to \$40 off.

These workshops include 3-1/2 hours of instruction and 2 hours of independent lab work each day.

These workshops include additional work time and meals, see page 7 for details.



Glass Fusing & Slumping I



Glass Blowing Teamwork
photo by Jonaya Leek

Glass Fusing & Slumping I

Entry-level

3GLA2111 5 SESSIONS Crucible Faculty

A Jul 25 - Aug 22 Mondays 7 - 10PM

Price \$340 Member Price \$315

Introduction to Glass Blowing

Entry-level

3GLA4511 4 SESSIONS Crucible Faculty

A Jul 29 - Aug 19 Fridays 6 - 10PM

Price \$575 Member Price \$530

Architectural Applications of Plate Glass: Using Recycled Glass

Entry-level

3GLA2711 5 SESSIONS Crucible Faculty

A Jul 30 - Aug 27 Saturdays 10AM - 1PM

Price \$315 Member Price \$290.50

Continuing Techniques in Glass Blowing



Prerequisites: Introduction to Glass Blowing

3GLA4711 4 SESSIONS Kier Lugo

A Jul 28 - Aug 18 Thursdays 6 - 10PM

Price \$575 Member Price \$530

Kiln-Cast Glass

Entry-level

3GLA3011 5 SESSIONS Warren

A Jul 27 - Aug 24 Wednesdays 7 - 10PM

Price \$375 Member Price \$352

Glass Cold Working & Engraving

Entry-level

3GLA3111 5 SESSIONS Warren

A Jul 25 - Aug 22 Mondays 7 - 10PM

Price \$355 Member Price \$330.50

Lab: Glass Fusing


Crucible Members Only


Prerequisites: Fusing and Slumping I & II or permission from Department Head

3LAB1611 7 SESSIONS

A Jul 26 - Sept 6 Tuesdays 6 - 10PM

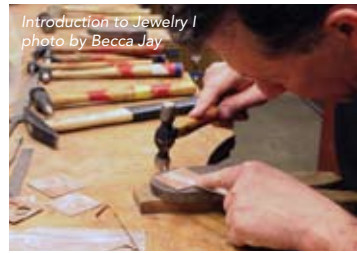
Price \$290 Member Price \$265.50

 When you sign up for an intro class and a continuing class in the same area, both with this gear symbol, you'll receive our **WORKING TOGETHER** discount of up to \$40 off.

 These workshops include 3-1/2 hours of instruction and 2 hours of independent lab work each day.



Glass Cold Working & Engraving
photo by Christa Curtin



Introduction to Jewelry I
photo by Becca Jay

Coming in Future Quarters...

- Continuing Techniques in Flameworking
- Continuing Techniques in Glass Beads
- Advanced Techniques in Flameworking
- Core Vessel Forming
- Glass Fusing & Slumping II
- Architectural Applications of Plate Glass: Using Recycled Glass
- Continuing Techniques in Kiln-Fired Glass: Working Deep
- Stained Glass Sculpture
- Pot Melt Glass Workshop
- Reactive Glass Workshop
- Continuing Techniques in Kiln-Fired Glass: Canes & Murrinis
- Reverse Relief-Cast Glass

For more information on these courses call us at (510) 444-0919 or visit our website at www.thecrucible.org.

HOT WHEELS

Here's a group of classes to help keep your ride on the road, whether it's a motorcycle or a bicycle you use for everyday transportation, an art bike or car you're inspired to create or a customized hot rod. If it has wheels, you can learn from the pros how to trick it out and keep it running in top condition.

Coming in Future Quarters...

- Bicycle Mechanic Workshop
- The Art of Motorcycle Maintenance and Repair
- Sheet Metal Forming with Evan Wilcox

For more information on these courses call us at (510) 444-0919 or visit our website at www.thecrucible.org.

JEWELRY

The Crucible's jewelry program teaches basic skills and techniques in a variety of methods, from traditional metalsmithing and fabrication to casting metal using the lost wax method, setting gemstones or shaping modern resin and clay. Introductory classes teach properties of metals and use of appropriate tools to create original pieces of jewelry or small sculpture, while advanced classes expand your knowledge into specific techniques and teach you how to make your own tools or even design your own home studio.

Introduction to Jewelry & Metals I



Entry-level

3JWL1011 INTENSIVE Crucible Faculty

A	Jul 23 - 24	Saturday & Sunday	10AM - 6PM
B	Aug 20-21	Saturday & Sunday	10AM - 6PM

Price \$320 Member Price \$296

3JWL1011 FAMILY FUN WEEKEND Crucible Faculty

FA	Aug 20-21	Saturday & Sunday	10AM - 6PM
----	-----------	-------------------	------------

Price for Two \$520 Member Price \$484

3JWL1111 5 SESSIONS Crucible Faculty

A	Jul 25 - Aug 22	Mondays	7 - 10PM
---	-----------------	---------	----------

Price \$320 Member Price \$296



Chainmaking
photo by AkikoPhoto



Three-Dimensional Metalsmithing
photo by Jennifer Harity

Introduction to Jewelry & Metals II

Prerequisite: Introduction to Jewelry & Metals I

3JWL1211 INTENSIVE Crucible Faculty
A Aug 27-28 Saturday & Sunday 10AM - 6PM
Price \$320 Member Price \$296

3JWL1311 5 SESSIONS Crucible Faculty
A Jul 27 - Aug 24 Wednesdays 7 - 10PM
Price \$320 Member Price \$296

Casting Wax to Silver Jewelry

Entry-level

3JWL1511 INTENSIVE Crucible Faculty
A Aug 13-14 Saturday & Sunday 10AM - 6PM
Price \$370 Member Price \$345.50

Exploration in Chainmaking

Entry-level

3JWL2011 INTENSIVE Crucible Faculty
A Aug 6-7 Saturday & Sunday 10AM - 6PM
Price \$275 Member Price \$254

Introduction to Cast Resin and Silver Jewelry

Entry-level

3JWL2011 5 SESSIONS Norika Takada
A Aug 16-30 Tuesday & Thursday 6:30 - 9:30PM
Price \$320 Member Price \$296

Gemology

Entry-level

3JWL5811 1 SESSION Angela Grigsby, G.G., G.J.
A Aug 14 Sunday 11AM - 4PM
Price \$90 Member Price \$83

Introduction to Keum-Boo: Korean Metalsmithing

Prerequisite: Introduction to Jewelry & Metals I

3JWL5511 2 SESSIONS Norika Takada
A Aug 16 & Aug 18 Tuesday & Thursday 3 - 6PM
Price \$245 Member Price \$230.50

Home Jewelry Studio Design

Entry-level

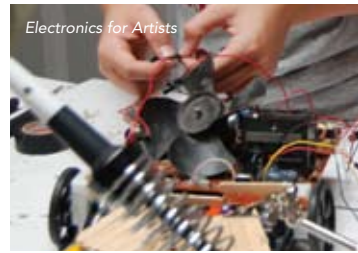
3JWL5711 1 SESSION Crucible Faculty
A Aug 13 Saturday 10AM - 5PM
Price \$135 Member Price \$126



Chasing & Repoussé
photo by Becca Jay



Art Clay Silver
pieces by Arlene Mornick
photo by Jennifer Harrity



Electronics for Artists

Introduction to Art Clay Silver

Entry-level

3ENL1511 INTENSIVE Arlene Mornick
A Jul 23-24 Saturday & Sunday 10AM - 2PM

Price \$205 *Member Price* \$193

Coming in Future Quarters...

- Three-Dimensional Metalsmithing
- Making Your Own Clasps & Finds
- Exploration in Stone Setting
- Incorporating Found Objects into Your Jewelry
- Chasing & Repoussé
- Bead Casting Weekend
- Introduction to Rubber Mold Making for Jewelry
- Making Your Own Jewelry Stamping Tools
- Continuing Techniques in Art Clay Silver
- Mixed Metal Silver and Copper: Art Clay
- Silver Bracelet and Chain Mail
- Viking Knit with Art Clay
- Art Clay Silver and Enameling

For more information on these courses call us at
(510) 444-0919 or visit our website at www.thecrucible.org.



Jewelry Sawing - Introduction to Jewelry & Metals I
photo by Christa Curtin

KINETICS & ELECTRONICS

Kinetic art contains moving parts and depends on motion or sound for its effect. The moving parts can be powered by wind, by a motor, by clockwork or manually. The possibilities of integrating movement and sound with artwork are nearly endless—from wind-powered mobiles to motorized robots, art cars, flaming sculptures and more. You can learn to add movement, sound and interactivity to your artwork in classes that explore and explain the physics of movement, electronics and mechanical components, microcontrollers and even flame effects. Then take a project lab to practice and perfect your skills and make your wildest ideas a dynamic reality.

Introduction to Mechanical Sculpture

Entry-level

3KIN1011 5 SESSIONS Crucible Faculty
A Jul 25 - Aug 22 Mondays 6 - 9PM


Price \$270 *Member Price* \$250

Electromechanics for Everything

Entry-level

3KIN1211 5 SESSIONS Crucible Faculty
A Jul 27 - Aug 24 Wednesdays 6 - 9PM

Price \$305 *Member Price* \$281.50

 When you sign up for an intro class and a continuing class in the same area, both with this gear symbol, you'll receive our **WORKING TOGETHER** discount of up to \$40 off.



Flame Effects for Art
photo by David Nichols



Machine Shop - Mother Machines
photo by Eric Gillet

Arduino Microcontrollers: Building Smart Art

Entry-level

3KIN1711 5 SESSIONS Crucible Faculty

A Jul 26 - Aug 23 Tuesdays 6 - 9PM

Price \$290 Member Price \$270

Flame Effects for Art

Entry-level



3KIN4011 INTENSIVE Crucible Faculty

A Jul 23 - 24 Saturday & Sunday 10AM - 6PM

Price \$430 Member Price \$408

Electronic Controlled Flame Effects

Entry-level



3KIN2011 5 SESSIONS Crucible Faculty

A Jul 28 - Aug 25 Thursdays 6 - 9PM

Price \$425 Member Price \$404

Coming in Future Quarters...

- Electronics For Artists
- Programming Interactive Art and Games iwth Processing
- Soft Circuits
- Handmade Electronic Music & Sound Design
- Kinetics Project Lab

For more information on these courses call us at
(510) 444-0919 or visit our website at www.thecrucible.org.

MACHINE SHOP

Machining is a material removal method in which power-driven tools such as lathes, milling machines, drill presses and drive sharp cutting tools to cut materials to a desired precision and accuracy. Machining is used on engines, bicycles, appliances, kinetic or mechanical projects and much more. Our machine shop also has a lab for experienced workers to work on personal projects and for new students to perfect their machining skills.

The Mother Machines: Introduction to Turning & Milling

Entry-level

3MAC1011 10 SESSIONS Ken Gilliland

A Jul 26 - Aug 25 Tuesdays & Thursdays 7 - 10PM

Price \$520 Member Price \$481

Lab: Machine Shop

Crucible Members Only

Prerequisites: Mother Machines or permission from
Department Head

3LAB1911 5 SESSIONS

A Jul 27 - Aug 24 Wednesdays 6 - 10PM

Price \$175 Member Price \$159

Reproduction in Plastics

Ribbon Burner - Neon
photo by Christa Curtin

MOLDMAKING

Molds are used to produce everything from objects of art to kitchen sinks; both as a step to create unique original works and to make multiples. When you have a three-dimensional piece to duplicate, creating the right type of mold from the original is the first step. Whether you work large or small, in metal, resin, plastic or glass, our moldmaking classes give you a great foundation and teach you which technique and which materials to use for the best results.

Reproduction in Plastics

Entry-level

3MLD1211 5 SESSIONS Billy Hiebert
 A Jul 25 - Aug 22 Mondays 7 - 10PM
 Price \$280 Member Price \$259

Coming in Future Quarters...

- Exploring Moldmaking
- Life Casting

For more information on these courses call us at (510) 444-0919 or visit our website at www.thecrucible.org.

Crossfire Burner - Neon
photo by AkikoPhoto

NEON & LIGHT



Radiant light technology has developed materials and processes that greatly expand light design's possibilities and palette. Whether incandescent, fluorescent, neon, LED, plasma or electro-luminescent (EL) wire makes the light, these classes introduce and explain the techniques, tools, properties and adaptability of luminous materials. Finished projects can stand alone or be combined with the many other processes and media taught at The Crucible.

Introduction to Neon

Entry-level

3NEL1011 2 SESSIONS Christian Schiess & Norman Moore
 A Aug 21 & 28 Sundays 10AM - 6PM
 Price \$345 Member Price \$320.50

3NEL1011 FAMILY FUN WEEKEND Christian Schiess & Norman Moore

FA Aug 21 & 28 Sundays 10AM - 6PM
 Price for Parent & Child \$570 Member Price \$533

3NEL1111 5 SESSIONS Christian Schiess & Norman Moore

A Jul 23 - Aug 20 Saturdays 2 - 5PM
 B Jul 26 - Aug 23 Tuesdays 6 - 9PM

Price \$345 Member Price \$320.50



When you sign up for an intro class and a continuing class in the same area, both with this gear symbol, you'll receive our **WORKING TOGETHER** discount of up to \$40 off.



Continuing Techniques in Neon

Prerequisite: Introduction to Neon or consent of the instructor



3NEL1511 5 SESSIONS Christian Schiess & Norman Moore

A Jul 23 - Aug 20 Saturdays 2 - 5PM
B Jul 26 - Aug 23 Tuesdays 6 - 9PM

Price \$325 Member Price \$301

Techniques in Neon Sign Design

Prerequisites: Introduction to Neon and Continuing Techniques in Neon or consent of the instructor

3NEL5011 5 SESSIONS Danny Baggs

A Jul 25 - Aug 22 Mondays 7 - 10PM

Price \$365 Member Price \$340.50

EL-Wire Workshop

Entry-level class

3NEL2011 1 SESSION Steve Boverie

A Jul 30 Saturdays 12-4PM

Price \$200 Member Price \$186.50

Special Effects with EL-Wire

Prerequisite: EL-Wire Workshop

3NEL2111 1 SESSION Steve Boverie

A Aug 6 Saturdays 12-4PM

Price \$210 Member Price \$197.50

Coming in Future Quarters...

- Plasma Sculpture
- Demystifying the Light-Emitting Diode (LED)
- Neon Lab

For more information on these courses call us at (510) 444-0919 or visit our website at www.thecrucible.org.

RESOURCES FOR ARTISTS

Whether you're just beginning to explore your creativity or are an experienced artist, the classes in this section are designed to assist you: from understanding basic design principles and material properties to finding your inner muse. Specific workshops help you navigate copyright law and get your work professionally photographed.

Design for the Third Dimension

Entry-level

3RES1211 5 SESSIONS Billy Hiebert


A Jul 25 - Aug 22 Mondays 7 - 10PM

Price \$160 Member Price \$146.50

Coming in Future Quarters...

- Properties of Metals & Materials
- Copyright Law for Artists
- Have Your Artwork Professionally Photographed

For more information on this course call us at (510) 444-0919 or visit our website at www.thecrucible.org.

 When you sign up for an intro class and a continuing class in the same area, both with this gear symbol, you'll receive our **WORKING TOGETHER** discount of up to \$40 off.

Cartoneria – Student Projects
photo by Christa Curtin



Introduction to Sewing:
A Crash Course



SOFT SCULPTURE

It's not all about metal, glass and fire at The Crucible. Come check out our softer side with classes that reacquaint you with your sewing machine or teach you how to turn old T-shirts into hot couture, create three-dimensional photography or discover the ancient art of cartoneria.

Cartoneria (Mexican Paper Sculpture)

Entry-level

3TEX1211 5 SESSIONS Ruben Guzman

A Jul 26 - Aug 23 Tuesdays 6 - 10PM

Price \$265 Member Price \$242

Introduction to Sewing: A Crash Course

Entry-level

3TEX2011 1 SESSION Crucible Faculty

A Aug 10 Wednesday 6 - 10PM

Price \$100 Member Price \$93.50

Coming in Future Quarters...

- T-Shirt Reconstruction
- Stereo Photography

For more information on these courses call us at
(510) 444-0919 or visit our website at www.thecrucible.org.

STONE WORKING

The Crucible's stone classes teach the skills you will need to carve stone, sculpt it into vibrant and organic art pieces, mold it into furniture and even cast concrete counter tops. You'll learn traditional hand-carving techniques and how to work with pneumatic tools, as well as how to design and shape different materials.

Stone Carving

Entry-level

3STN1011 10 SESSIONS Barry Baldwin

A Jul 25 - Aug 24 Mondays & Wednesdays 7 - 10PM

Price \$420 Member Price \$384

NOTE: There will be an additional charge for stones.

Coming in Future Quarters...

- Concrete Sculpture

For more information on this course call us at
(510) 444-0919 or visit our website at www.thecrucible.org.





Introduction to Welded Sculpture



Introduction to Welded Sculpture

WELDING

Joining metal with heat is a fabrication process used since the Bronze Age, and new technology develops continually. The Crucible teaches beginning and advanced classes in four different kinds of welding: oxyacetylene gas welding, arc (or "stick") welding, metal inert gas (MIG) welding and tungsten inert gas (TIG) welding. Start with a beginning class in one type of welding, or begin by exploring all four types of welding in our Exploring Welding class.

Exploring Welding

Entry-level

3WLD1011 INTENSIVE Crucible Faculty
 A Jul 23 - 24 Saturday & Sunday 10AM - 2PM

Price \$185 Member Price \$171.50



Oxyacetylene Welding
 photo by Matthew Silvey

Introduction to Welded Sculpture



Entry-level

3ARC1011 INTENSIVE Crucible Faculty
 A Jul 30 - 31 Saturday & Sunday 10AM - 6PM
 B Aug 20-21 Saturday & Sunday 10AM - 6PM

Price \$355 Member Price \$326

3ARC1011 FAMILY FUN WEEKEND Crucible Faculty
 FA Aug 20-21 Saturday & Sunday 10AM - 6PM

Price for Two \$565 Member Price \$521.50

3ARC1111 5 SESSIONS Crucible Faculty
 A Jul 25 - Aug 22 Mondays 7 - 10PM
 B Jul 26 - Aug 23 Tuesdays 7 - 10PM
 D Jul 27 - Aug 24 Wednesdays 7 - 10PM
 E Jul 28 - Aug 25 Thursdays 7 - 10PM

Price \$355 Member Price \$326

3ARC1111 SUMMER WORKSHOPS Crucible Faculty

WA Aug 8 - 12 Monday - Friday 10AM - 4PM
 Price \$430 Member Price \$393.50

Women's Welding

Entry-level

3ARC9911 INTENSIVE Crucible Faculty
 A Aug 13 - 14 Saturday & Sunday 10AM - 6PM

Price \$355 Member Price \$326

When you sign up for an intro class and a continuing class in the same area, both with this gear symbol, you'll receive our **WORKING TOGETHER** discount of up to \$40 off.

These workshops include 3-1/2 hours of instruction and 2 hours of independent lab work each day.



Oxyacetylene Torch Cutting
photo by Becca Jay



MIG Welding
photo by Akiko Photo

Continuing Techniques in Welded Sculpture

Prerequisite: Introduction to Welded Sculpture or Women's Welding

3ARC1311 INTENSIVE Crucible Faculty

A Aug 27 - 28 Saturday & Sunday 10AM - 6PM

Price \$315 Member Price \$290

Introduction to MIG Welding

Entry-level

3MIG1011 INTENSIVE Crucible Faculty

A Jul 30 - 31 Saturday & Sunday 10AM - 6PM
B Aug 20-21 Saturday & Sunday 10AM - 6PM

Price \$385 Member Price \$354.50

3MIG1011 FAMILY FUN WEEKEND Crucible Faculty

FA Aug 20-21 Saturday & Sunday 10AM - 6PM

Price for Two \$620 Member Price \$574

Oxyacetylene Welding

Entry-level

3ARC2011 INTENSIVE Crucible Faculty

A Aug 6 - 7 Saturday & Sunday 10AM - 6PM

Price \$365 Member Price \$336.50

3MIG1111 5 SESSIONS Crucible Faculty

A Jul 26 - Aug 23 Tuesdays 7 - 10PM
B Jul 27 - Aug 24 Wednesdays 7 - 10PM
D Jul 28 - Aug 25 Thursdays 7 - 10PM

Price \$385 Member Price \$354.50



MIG Welding
photo by AkikoPhoto



BYOB: Build Your Own BBQ

Prerequisite: MIG and oxyacetylene cutting experience

3WLD3011	5 SESSIONS		Peter Kropf
A	Jul 22 - Aug 19	Fridays	6 -9PM
Price \$375 Member Price \$345.50			

Beginning TIG

Entry-level

3TIG1011	INTENSIVE		Crucible Faculty
A	Jul 30 - 31	Saturday & Sunday	10AM - 6PM
B	Aug 20-21	Saturday & Sunday	10AM - 6PM
Price \$385 Member Price \$354.50			

3TIG1011	FAMILY FUN WEEKEND		Crucible Faculty
FA	Aug 20-21	Saturday & Sunday	10AM - 6PM
Price for Two \$620 Member Price \$574			

3TIG1611	5 SESSIONS		Crucible Faculty
A	Jul 25 - Aug 22	Mondays	7 - 10PM
B	Jul 26 - Aug 23	Tuesdays	6 - 9PM
C	Jul 28 - Aug 25	Thursdays	6 - 9PM
Price \$385 Member Price \$354.50			

Continuing Techniques in TIG

Prerequisite: Beginning TIG

3TIG1711	INTENSIVE		Crucible Faculty
A	Aug 27 - 28	Saturday & Sunday	10AM - 6PM
Price \$360 Member Price \$332			

Sculpting with TIG

Prerequisite: TIG experience

3TIG5011	5 SESSIONS		Crucible Faculty
A	Jul 27 - Aug 24	Wednesdays	6 - 9PM
Price \$345 Member Price \$320.50			

Coming in Future Quarters...

- Metal Fabrication: Round
- Furniture Fabrication and MIG Welding
- Metal + Wood
- TIG & Titanium
- Art of the One-Speed: Building a Bicycle Frame

For more information on these courses call us at (510) 444-0919 or visit our website at www.thecrucible.org.





Beginning Woodworking
Photo by AkikoPhoto



Piece by Rusty Howson
Continuing Techniques in Woodworking
Photo by Becca Jay

WOODWORKING

In The Crucible’s woodworking program, you can learn to work with wood using hand tools and power tools, learn to carve and turn wood and apply your skills to projects—like building a ukulele!

Build a Mandolin or a Ukulele in Just Four Days!

Entry-level

3WOD4411 4 SESSIONS Rick Turner

A Aug 20-28 Saturday & Sunday 10AM - 6PM

Price \$475 Member Price \$442

Fundamentals of Woodworking

Entry-level

3WOD1011 INTENSIVE Michael Bray

A Jul 23 - 24 Saturday & Sunday 10AM - 6PM

Price \$245 Member Price \$224

Coming in Future Quarters...

- Continuing Techniques in Woodworking
- Continuing Techniques in Woodturning
- Woodcarving
- One Sheet of Plywood: Design & Build

For more information on these courses call us at (510) 444-0919 or visit our website at www.thecrucible.org.

Beginning Woodworking

Entry-level

3WOD2111 10 SESSIONS Crucible Faculty

A Jul 26 - Aug 25 Tuesdays & Thursdays 6 - 10PM

Price \$550 Member Price \$503

Woodturning

Entry-level

3WOD3111 INTENSIVE Joey Gothbrath

A Aug 6 - 7 Saturday & Sunday 11AM - 5PM

Price \$330 Member Price \$302



One Sheet of Plywood
photo by Christa Curtin



Mudslinging Madness



Extreme Gizmos

YOUTH CLASSES

Through classes at The Crucible, young people gain skills that inspire creativity, build confidence and foster responsibility. The Crucible offers classes throughout the year for young people ages 8 to 17. Weekly classes provide an exciting alternative to traditional after-school programs. Weekend classes meet the needs of youth and parents with busy schedules, and give students the opportunity to immerse themselves in a subject area. Weeklong summer camps provide fun and engaging industrial arts learning opportunities.

AGES 8-11

Youth Ceramics: Mudslinging Madness!

3CER1111	SUMMER CAMP	Crucible Faculty
YA Jun 27 - Jul 1	Monday-Friday	9AM - 12PM
YB Jul 18 - 22	Monday-Friday	9AM - 12PM
YC Jul 25 - 29	Monday-Friday	9AM - 12PM
YD Aug 1 - 5	Monday-Friday	9AM - 12PM
<i>Price \$260 Member Price \$241</i>		

Youth Clay Mask Making

3CER1211	SUMMER CAMP	Crucible Faculty
YA Jun 27 - Jul 1	Monday-Friday	1 - 4PM
YB Jul 18 - 22	Monday-Friday	1 - 4PM
YC Jul 25 - 29	Monday-Friday	1 - 4PM
YD Aug 1 - 5	Monday-Friday	1 - 4PM
<i>Price \$260 Member Price \$241</i>		

Youth Jazzy Clay Jewelry

3JWL1411	SUMMER CAMP	Crucible Faculty
YA Jun 27 - Jul 1	Monday-Friday	1 - 4PM
YB Jul 25 - 29	Monday-Friday	1 - 4PM
<i>Price \$250 Member Price \$230</i>		

Youth Cartoneria

3TEX1211	SUMMER CAMP	Crucible Faculty
YA Jun 27 - Jul 1	Monday-Friday	9AM - 12PM
YB Jul 18 - 22	Monday-Friday	9AM - 12PM
YC Jul 25 - 29	Monday-Friday	9AM - 12PM
YD Aug 1 - 5	Monday-Friday	9AM - 12PM
<i>Price \$235 Member Price \$215</i>		

Youth Wire Jewelry: Intro to Bling!

3JWL2511	SUMMER CAMP	Crucible Faculty
YA Jun 27 - Jul 1	Monday-Friday	9AM - 12PM
YB Jul 18 - 22	Monday-Friday	9AM - 12PM
YC Jul 25 - 29	Monday-Friday	9AM - 12PM
<i>Price \$240 Member Price \$222</i>		

Youth Extreme Gizmos

3KIN1411	SUMMER CAMP	Crucible Faculty
YA Jun 27 - Jul 1	Monday-Friday	9AM - 12PM
YB Jul 18 - 22	Monday-Friday	1 - 4PM
YC Jul 25 - 29	Monday-Friday	9AM - 12PM
YD Aug 1 - 5	Monday-Friday	1 - 4PM
<i>Price \$255 Member Price \$235</i>		



Youth Frame Alteration
photo by Becca Jay



Youth Super Sculpture

3OTH1111	SUMMER CAMP	Crucible Faculty
YA Jun 27 - Jul 1	Monday-Friday	1 - 4PM
YB Jul 18 - 22	Monday-Friday	1 - 4PM
YC Jul 25 - 29	Monday-Friday	1 - 4PM
YD Aug 1 - 5	Monday-Friday	1 - 4PM

Price \$250 Member Price \$230

Youth Woodcarving

3WOD1111	SUMMER CAMP	Crucible Faculty
YA Jun 27 - Jul 1	Monday-Friday	1 - 4PM
YB Jul 18 - 22	Monday-Friday	1 - 4PM
YC Jul 25 - 29	Monday-Friday	1 - 4PM
YD Aug 1 - 5	Monday-Friday	1 - 4PM

Price \$270 Member Price \$248

Youth Glass Flameworking

3GLA1111	SUMMER CAMP	Crucible Faculty
YA Jun 27 - Jul 1	Monday-Friday	9AM -12PM
YB Jun 27 - Jul 1	Monday-Friday	1 - 4PM
YC Jul 18 - 22	Monday-Friday	9AM -12PM
YD Jul 18 - 22	Monday-Friday	1 - 4PM
YE Jul 25 - 29	Monday-Friday	9AM -12PM
YF Jul 25 - 29	Monday-Friday	1 - 4PM
YG Aug 1 - 5	Monday-Friday	9AM -12PM
YH Aug 1 - 5	Monday-Friday	1 - 4PM

Price \$315 Member Price \$288.50

Youth Frame Alteration: Art Bikes

3WLD1111	SUMMER CAMP	Crucible Faculty
YA Jul 18 - 22	Monday-Friday	9AM -4PM
YB Aug 1 - 5	Monday-Friday	9AM -4PM

Price \$750 Member Price \$690

AGES 12-17

Youth Blacksmithing

3BLK1111	SUMMER CAMP	Crucible Faculty
YA Jun 27 - Jul 1	Monday-Friday	9AM -12PM
YB Jun 27 - Jul 1	Monday-Friday	1 - 4PM
YC Jul 18 - 22	Monday-Friday	9AM -12PM
YD Jul 18 - 22	Monday-Friday	1 - 4PM
YE Jul 25 - 29	Monday-Friday	9AM -12PM
YF Jul 25 - 29	Monday-Friday	1 - 4PM
YG Aug 1 - 5	Monday-Friday	9AM -12PM
YH Aug 1 - 5	Monday-Friday	1 - 4PM

Price \$320 Member Price \$296

Youth Fused Glass & Mosaic Mania!

3GLA2111	SUMMER CAMP	Crucible Faculty
YA Jun 27 - Jul 1	Monday-Friday	9AM -12PM
YB Jul 18 - 22	Monday-Friday	9AM -12PM
YC Jul 25 - 29	Monday-Friday	9AM -12PM
YD Aug 1 - 5	Monday-Friday	9AM -12PM

Price \$300 Member Price \$277

Youth Clay Animation

3KIN3111	SUMMER CAMP	Crucible Faculty
YA Aug 1 - 5	Monday-Friday	9AM -12PM

Price \$320 Member Price \$295

Youth Introduction to Glass Blowing

3GLA4511	SUMMER CAMP	Crucible Faculty
YA Aug 1 - 5	Monday-Friday	1 - 4PM

Price \$575 Member Price \$530

Note: Students must bring their own digital camera.



Neon Glass-Tube Sculpture



Girls Foundry

Youth Glass-Tube Sculpture: Intro to Neon

3NEL111 SUMMER CAMP Crucible Faculty

YA	Jun 27 - Jul 1	Monday-Friday	9AM - 12PM
YB	Jul 18 - 22	Monday-Friday	9AM - 12PM
YC	Jul 25 - 29	Monday-Friday	9AM - 12PM
YD	Aug 1 - 5	Monday-Friday	9AM - 12PM

Price \$270 Member Price \$249

Youth Exploration in Metal Jewelry

3JWL111 SUMMER CAMP Crucible Faculty

YA	Jun 27 - Jul 1	Monday-Friday	9AM - 12PM
YB	Jun 27 - Jul 1	Monday-Friday	1 - 4PM
YC	Jul 18 - 22	Monday-Friday	9AM - 12PM
YD	Jul 18 - 22	Monday-Friday	1 - 4PM
YE	Jul 25 - 29	Monday-Friday	9AM - 12PM
YG	Aug 1 - 5	Monday-Friday	9AM - 12PM
YH	Aug 1 - 5	Monday-Friday	1 - 4PM

Price \$300 Member Price \$277

Youth Casting Wax to Silver Jewelry

3JWL1611 SUMMER CAMP Crucible Faculty

YA	Jul 25 - 29	Monday-Friday	1 - 4PM
----	-------------	---------------	---------

Price \$380 Member Price \$352.50

Youth Enameling

3ENL111 SUMMER CAMP Crucible Faculty

YA	Jul 18 - 22	Monday-Friday	1 - 4PM
YB	Aug 1 - 5	Monday-Friday	1 - 4PM

Price \$250 Member Price \$229

Youth Radical Robots

3KIN1511 SUMMER CAMP Crucible Faculty

YA	Jun 27 - Jul 1	Monday-Friday	1 - 4PM
YB	Jul 18 - 22	Monday-Friday	9AM - 12PM
YC	Jul 25 - 29	Monday-Friday	1 - 4PM
YD	Aug 1 - 5	Monday-Friday	9AM - 12PM

Price \$310 Member Price \$286.50



Blacksmithing



Youth Adventures in Sand Casting

3FOU2211	SUMMER CAMP	Crucible Faculty
YA Jun 27 - Jul 1	Monday-Friday	9AM - 12PM
YB Jul 18 - 22	Monday-Friday	9AM - 12PM
YC Jul 25 - 29	Monday-Friday	9AM - 12PM
YD Aug 1 - 5	Monday-Friday	9AM - 12PM

Price \$310 Member Price \$288

Youth TIG Welding

3TIG1011	SUMMER CAMP	Crucible Faculty
YA Jun 27 - Jul 1	Monday-Friday	9AM - 12PM
YB Jun 27 - Jul 1	Monday-Friday	1 - 4PM
YC Jul 18 - 22	Monday-Friday	9AM - 12PM
YD Jul 18 - 22	Monday-Friday	1 - 4PM
YE Jul 25 - 29	Monday-Friday	9AM - 12PM
YF Jul 25 - 29	Monday-Friday	1 - 4PM
YG Aug 1 - 5	Monday-Friday	9AM - 12PM
YH Aug 1 - 5	Monday-Friday	1 - 4PM

Price \$385 Member Price \$354.50

Youth Introduction to Welded Sculpture

3ARC1111	SUMMER CAMP	Crucible Faculty
YA Jun 27 - Jul 1	Monday-Friday	9AM - 12PM
YB Jun 27 - Jul 1	Monday-Friday	1 - 4PM
YC Jul 18 - 22	Monday-Friday	9AM - 12PM
YD Jul 18 - 22	Monday-Friday	1 - 4PM
YE Jul 25 - 29	Monday-Friday	9AM - 12PM
YF Jul 25 - 29	Monday-Friday	1 - 4PM
YG Aug 1 - 5	Monday-Friday	9AM - 12PM
YH Aug 1 - 5	Monday-Friday	1 - 4PM

Price \$330 Member Price \$305

Youth Woodturning

3WOD3111	SUMMER CAMP	Crucible Faculty
YA Jun 27 - Jul 1	Monday-Friday	9AM - 12PM
YB Jul 18 - 22	Monday-Friday	9AM - 12PM
YC Jul 25 - 29	Monday-Friday	9AM - 12PM
YD Aug 1 - 5	Monday-Friday	9AM - 12PM

Price \$360 Member Price \$329

Youth MIG Welding

3MIG1111	SUMMER CAMP	Crucible Faculty
YA Jun 27 - Jul 1	Monday-Friday	9AM - 12PM
YB Jun 27 - Jul 1	Monday-Friday	1 - 4PM
YC Jul 25 - 29	Monday-Friday	9AM - 12PM
YD Jul 25 - 29	Monday-Friday	1 - 4PM

Price \$385 Member Price \$354.50





Corporate Teambuilding Project
Logo Tile by ClifBar

Contribute. Collaborate. Create.

Whether it's a project kickoff, an executive retreat, or a year-end party, The Crucible offers a unique way to ignite your company's creative fires. Working with the Crucible's staff, your team is guided through hands-on art workshops aimed at rekindling their imaginations, while encouraging them to collaborate in new ways. Our workshops can meet the needs of any group, from as few as six to over 100.

BENEFITS OF TEAM BUILDING:

- Renew an understanding of the importance of working together
- Develop an atmosphere of trust, confidence, energy and creativity
- Improve moral and leadership skills
- Create an environment that motivates people to achieve goals and objectives
- Enhance communication, decision-making skills and self-confidence
- Establish rapport and tolerance between team members
- Increase productivity, competence and profit
- Achieve renewed team spirit as team members fight obstacles and challenges as one unit

WHAT TYPE OF PROJECTS HAVE BEEN DONE IN THE PAST?

- Fused glass company logo
- Conference table
- Mobile cocktail bar
- Large glass clock
- Iron coat rack
- Iron throne style chair with logo

WHAT ARE MY OPTIONS?

The Crucible has a workshop to fit your organization's budget and schedule.

In a **2-hour Mini-Workshop**, your team gets a taste of one technique, such as welding, blacksmithing or glass flameworking.

In a **3-4 hour Half-Day Workshop**, your teammates complete a small individual art project or collaborate on a group piece.

In a **6-hour Full-Day Workshop**, your group can work in multiple areas, such as torch cutting and welding, to create individual or group projects.

In a **6-8 hour Design and Build Workshop**, your group collaborates and designs a single large art project using multiple techniques.

Mini-Workshops start as low as \$800. Design and build packages, including lunch and a wine-and-cheese art reception, start at \$3500.

CATERING & PHOTOGRAPHY

The Crucible can provide lunch and snacks for your team or an elegant wine-and-cheese reception following your workshop. You can also book a photographer to document your day.

MORE INFO

To learn more or to schedule a workshop:
visit – www.thecrucible.org
call – 510.444.0919 x102
email – teambuilding@thecrucible.org

CREATE PROGRAM

Crucible's Expanded Access to Tools & Equipment

Finding it difficult and expensive to set up your own workshop with all the equipment you need to do the projects that interest you? The CREATE program enables Crucible members to make use of The Crucible as their own workshop!

Through the CREATE program, after passing studio area check-outs, members can use The Crucible's tools and equipment during regular studio hours. Access can be purchased for a full 10 weeks or any 5 weeks within a fall, winter and spring semester, for 5 weeks during the summer semester, or for all 4 semesters during the year.

HOURS OF ACCESS

Hours for CREATE Program members are **Monday through Friday, from 10 AM to 10 PM**, and **Saturday and Sunday, from 10 AM to 6 PM**.

Members are not permitted to work in an area during a class. Members must clean up and exit a work area 30 minutes before the start of a class or 15 minutes before closing time.

PRICES OF CREATE ACCESS:

To join CREATE you must be a Crucible member; see page 38 for membership information.

- \$1000 for full year access.
- \$350 per 10-week session in fall, winter or spring. (Not available during summer.)
- \$200 for 5-week session during any class quarter.
- Departmental safety checkout: \$40 per area. Cost for first 4 checkouts is applied to your CREATE Access Membership.
- Limited locker space is available for rent. A 2 ½' x 2' x 6 ½' locker can be rented as storage space for \$50 per month by CREATE Members.

MORE INFO

For more details on the CREATE program or to schedule a safety checkout:
visit – www.thecrucible.org
call – (510) 444-0919



STUDIO ACCESS

AREAS AVAILABLE THROUGH CREATE:

ARC Welding
Blacksmithing
Blacksmithing Power Hammers
Cold Glass Working
Fabrication Power Tools
Fabrication Cold Working Tools
Grinding
Jewelry
MIG Welding
Oxyacetylene
Plasma Cutter
Shell Room
TIG Welding
Wax Room
Woodshop
Woodturning

PRIVATE OR SHARED ARTIST STUDIOS

Now Available For Rent

Join the vibrant community of artists and artisans at The Crucible by renting a studio or a locker. Studio renters have 24-hour access to their studio equipped with industrial pallet racks and 120-volt electrical outlets in a secure building. Rents start at \$350 for 8' x 16' shared studios and \$625 for 16' x 16' full studios. Renters also have access to The Crucible's equipment and space during open studio hours and are a part of our collaborative, creative environment.

MORE INFO

To learn more:
visit – www.thecrucible.org
call – (510) 444-0919 x103
email – jonaya@thecrucible.org

SUPPORT THE CRUCIBLE

Make a gift to The Crucible Fund. Tuition and ticket sales cover less than 65% of our operating expenses. As a nonprofit organization, we rely on the support of our community to bridge this gap. Crucible Fund contributions support our annual programs including industrial art classes for youth and adults, free outreach programs for West Oakland residents and innovative collaborations with artists from throughout the Bay Area and beyond. Gifts of all sizes are needed and appreciated, and 100% tax-deductible.

Crucible Fund donors of \$2,500 and above receive a bronze plaque on our Donor Wall.

VOLUNTEERING

You can help us out – and earn discounts on classes. No experience or special skills are needed; donate your time at events, in the studio or in the office.

MEMBERSHIP

Join The Crucible community as a member and you'll receive benefits such as early registration, class discounts, priority access to events and more. Plus your support will enable us to continue providing our dynamic combination of arts, industry and community in a welcoming and inclusive environment that inspires innovation and sparks creativity.

To learn more, visit www.thecrucible.org, or call 510.444.0919.

MEMBER BENEFITS

FIRECRACKER :::: \$75/year

- Early registration for all classes
- Access to Crucible labs and Crucible's **Expanded Access to Tools & Equipment** (CREATE) program
- Discounts on classes (unlimited tuition discounts for one person)
- Discounts on event tickets (four per membership per event)
- Discounts on Crucible merchandise
- Priority access to Crucible events

PYRO :::: \$150/year

- Benefits listed above
- Crucible T-shirt
- Discounts on classes for you AND your family (membership includes unlimited tuition discounts for up to four people)

INFERNO :::: \$250/year

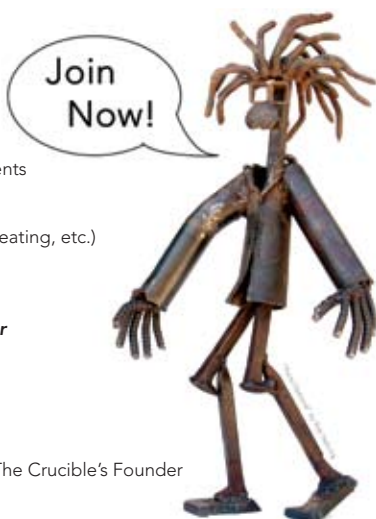
- Discounts for the whole family AND VIP access to events
- Benefits listed above
 - Member Concierge Service for Crucible events (call for your expedited ticket purchases, reserved seating, etc.)

PHOENIX :::: \$500/year

- Benefits listed above
- Limited edition Crucible DVD set: *Epic Fire Theater*
- Acknowledgment in Crucible catalog

VULCAN :::: \$1000/year

- Benefits listed above
- Silver Crucible lapel pin
- Invitation to a private behind-the-scenes tour with The Crucible's Founder





WE THANK YOU!

Donors Who Broke the Mold: Jennifer & John Chalsty

Thanks to those who have contributed at the Phoenix level and above since January 1, 2010:

Phoenix Donors (\$500 — \$999):

Asim Bhansali, Jan Casey, Loretta Clarke, Delphine & Alan Damon, Rudi Dundas, Crutcher Dunnivant, Tanya Holland, Sparky & Kiki & Charlotte Jewel, Deborah Kaminski, Gabrielle Kuzsel & Steven Young, Susie & Pat McBaine, James Parmley, Amy Slater & Garrett Gruener

Vulcan Donors (\$1,000 — \$2,499):

Margaret & David Claveau, Quinn Delaney & Wayne Jordan, Diana Meckfessel, Johanna Neaderhouser & Andre Burgoyne, Charles Olson, Miriam & Bill Rose, Todd Seabold, Mark Sinclair, Michelle & Ernest Urquhart, Renee Ventimiglic, Jim Wilson

Titan Donors (\$2,500 — \$4,999):

Mark Evans, Philip Hopkins, Gregory Thomas

Vesuvius Donors (\$5,000 — \$9,999):

Rebecca Bruce & Todd Koons, Annette Campbell-White & Ruediger Naumann-Etienne, Greg Hansen, Kevin Kosik & Anthony Ramon, Melissa Rosengard & John Russo

Prometheus Donors (\$10,000 and above):

Leslie Pritchett

Institutional Donors:

CASS Inc., Chalsty Family Foundation, Heatherly Born Fund, The Community Foundation of the Chattahoochee Valley Inc., NetTempo, Schnitzer Steel Industries



The Crucible is supported, in part, by a grant from the Alameda County Arts Commission.

The Crucible is supported by the National Endowment for the Arts.

INFERNO: A Fire Circus

July 15-16, 2011 • 7:00PM

Lorem ipsum dolor sit amet, consectetur adipiscing elit. Nunc hendrerit pulvinar magna, aliquet bibendum nisl lobortis vel. Vestibulum laoreet nunc eu mi imperdiet vel varius arcu aliquam. Aliquam molestie nisi at lectus congue non ullamcorper mi fermentum.

Fire & Light Soirée and Art Auction

July 14, 2011 • 6:00PM

Lorem ipsum dolor sit amet, consectetur adipiscing elit. Nunc hendrerit pulvinar magna, aliquet bibendum nisl lobortis vel. Vestibulum laoreet nunc eu mi imperdiet vel varius arcu aliquam.

For more information visit our website at
www.thecrucible.org/events



This schedule is printed on paper that is 10% post consumer waste, and is chlorine free. Please recycle this schedule when you are done.

THE CRUCIBLE®

1260 7TH STREET
OAKLAND, CA 94607
www.thecrucible.org

